



Mood Pan

MN-10

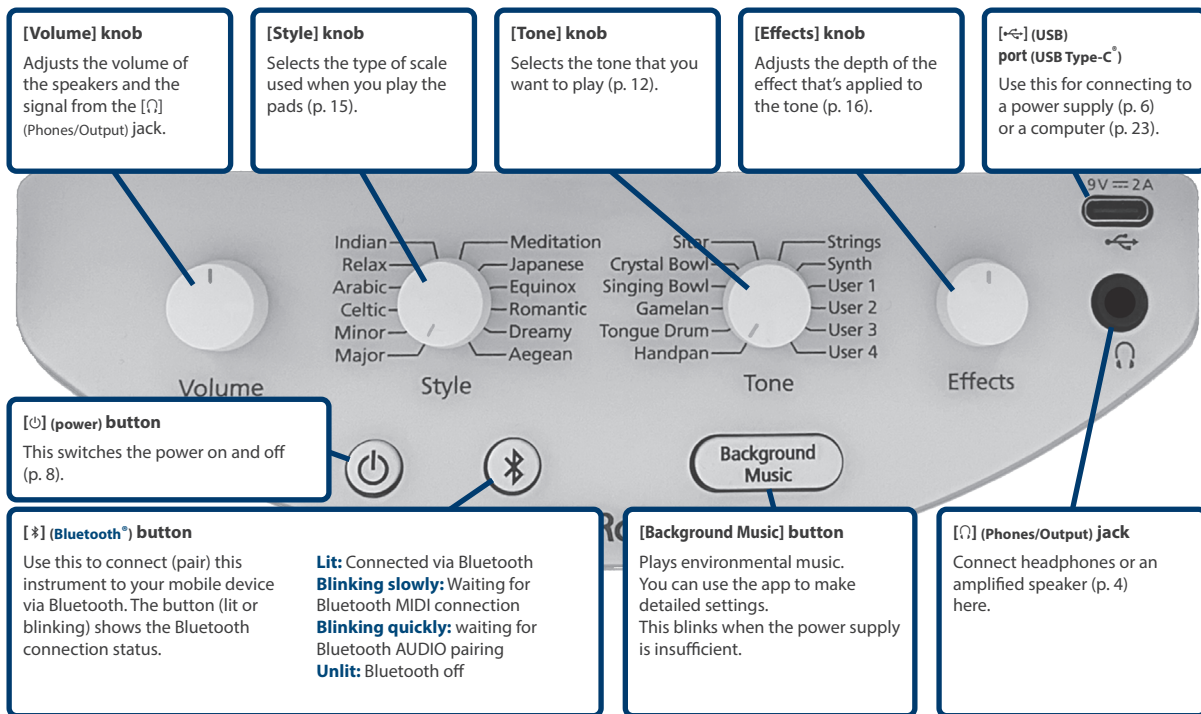
Owner's Manual



Before using this unit, carefully read "USING THE UNIT SAFELY" (p. 25) and "IMPORTANT NOTES" (p. 29). After reading, keep the document(s) where it will be available for immediate reference.

© 2025 Roland Corporation

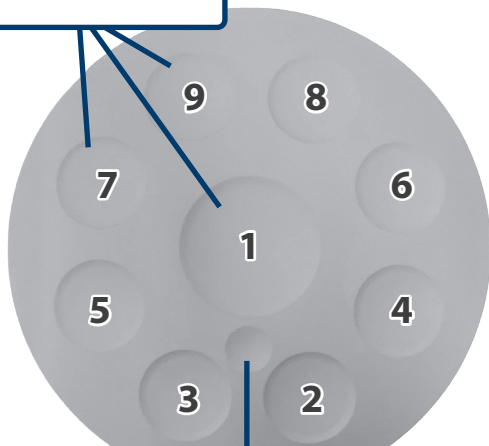
Panel descriptions



Panel descriptions

Performance pads

These pads play an ascending scale in the order (1–9) shown.



Special pad

Press this pad or hold it down while playing other performance pads to achieve a variety of effects.

- * If the "Sitar" tone is selected, you can play the sound of sympathetic strings.
- * If the "User4 Tuning Fork" tone is selected, you can play a tuning fork sound.

Built-in speakers

The built-in speakers are located here.



Battery compartment

If you are using the Mood Pan on batteries, insert six Ni-MH (AA, HR6) or alkaline batteries (AA, LR6) (p. 5).

- * Zinc-carbon batteries cannot be used.

Connecting external equipment

* To prevent malfunction and equipment failure, always turn down the volume, and turn off all the units before making any connections.

[🎧] (Phones/Output) jack

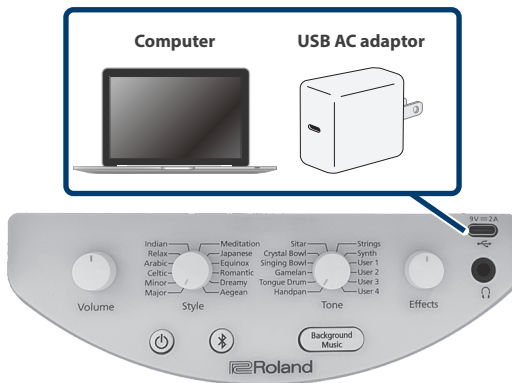
Connect headphones or an amplified speaker here.



[🔌] (USB) port

When using the built-in speakers

Connect a USB AC adaptor (with a USB Type-C® port, at least 9 V $\overline{\text{---}}$ /2 A) here that can supply at least 18 W of power, or connect this to your computer.



Power supply

You can power this instrument either with batteries or via the [•←] (USB) port.

Using batteries

- * If you are using batteries, insert six Ni-MH (AA, HR6) or alkaline (AA, LR6) batteries.
- * When installing or removing the batteries, turn off this instrument and disconnect all other devices or equipment.
- * When turning the instrument over, be careful so as to protect the buttons, knobs and other controls from damage. Handle the instrument carefully; do not drop it or allow it to topple over.

1. Remove the cover of the battery compartment on the bottom of this instrument.
2. Check the diagram found inside the battery compartment and make sure that the batteries are faced the right way.



3. After inserting the batteries, close the cover securely.

- * The expected battery life under continuous use depends on the conditions of use.
Ni-MH battery (1900 mAh): Approx. 5 hours
Alkaline battery: Approx. 4 hours
- * If you handle batteries improperly, you risk explosion and fluid leakage. Make sure that you carefully observe all of the items related to batteries that are listed in "USING THE UNIT SAFELY" (p. 25) and "IMPORTANT NOTES" (p. 29).
- * The power button blinks when the batteries are nearly depleted. Replace the batteries as soon as possible.
- * The volume may be lower when the batteries are nearly depleted.
- * When the batteries have been fully depleted, the [⏻] (power) button, [📶] (Bluetooth®) button and [Background Music] button blink several times, and the power turns off.



Power supply

Supplying power via [USB] (USB) port

You can power this instrument with a commercially available USB power adaptor.

The following USB power sources can be used.

When using the built-in speakers

- Standard USB AC adaptor (9 V $\overline{\text{---}}$ /over 2 A), 18 W or greater
 - * You might be able to use the USB AC adaptor (USB Type-C® port) used with your smartphone.
- USB bus power (computer, etc.)
- Mobile battery

NOTE

Some USB AC adaptors, computers, or mobile batteries do not work with this instrument.

When the connected USB AC adaptor cannot deliver at least 9 V/2 A of power

If the batteries have not been inserted

If the batteries are nearly depleted

The [Background Music] button keeps blinking.

- * The time during which the button stays lit gets longer during background music playback.



Sound is not heard from the speakers when there is insufficient power.

If the batteries have been inserted

The [Background Music] button blinks several times, and the instrument runs on battery power.

Supplying power via the USB port

When using the built-in speakers

Use a USB Type-C® to USB Type-C® cable.



You cannot use a USB Type-C® to USB A cable.



Turning the power on/off

Turning the power on

1. **Connect headphones or amplified speakers (both sold separately) to this instrument.**

* If amplified speakers are connected, turn the volume of the amplified speakers all the way down.

2. **Press the [⏻] (power) button.**

The [⏻] (power) button lights up, and the instrument turns on.

If the [Background Music] button keeps blinking

When using the built-in speakers

This means that the power supply to the [⏻] (USB) port is insufficient. Use a power supply of at least 18 W (p. 6).

3. **If amplified speakers are connected, turn on the power of the amplified speakers and adjust the volume.**

4. **Adjust the volume with the [Volume] knob.**

Turning the power off

1. **Long-press the [⏻] (power) button.**

The [⏻] (power) button goes dark, and the instrument turns off.

About the Auto Power Off function

- * This instrument turns off automatically after a predetermined amount of time has passed since it was last used for playing music or since its buttons or controls were operated (Auto Power Off function).



To make the batteries last longer or to conserve power, turn on the Auto Power Off function (by using the "Mood Pan Plus" app).

You can simply turn the power back on after it has turned off automatically.

- * The Auto Power Off function is disabled when the unit is connected via Bluetooth.

Playing

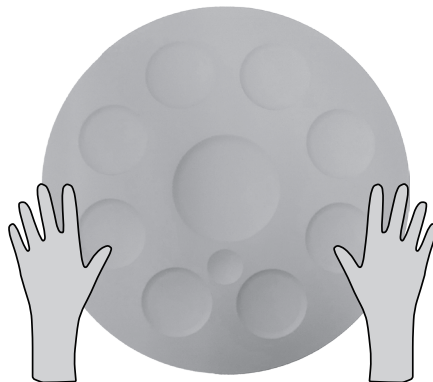
Use your hands to play the nine performance pads.

- * **Don't use any other objects (such as drum sticks or mallets) besides your hands to play the pads. Doing so may cause a malfunction.**
- The performance pad in the center triggers the lowest sound. The pads play an ascending scale in the order (1–9) shown.



- If you press slowly into the pads without hitting them, you can play the strings and synth sounds. Also, you can achieve a sitar bend effect (the pitch bends upwards) if you press into the performance pads.

- You can make unique sounds play by slapping the instrument around the edges. This can be useful for adding a rhythmic feel to your performance. You can't slap or play the performance pads and the areas around the edges on the instrument at the same time.

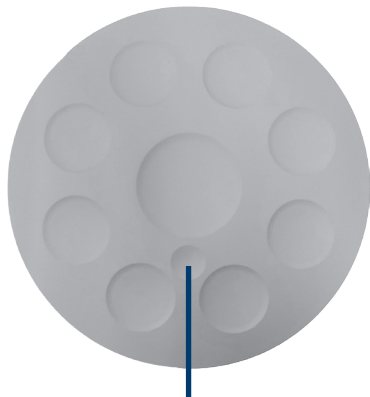


Playing

Special pad

Press this pad or hold it down while playing other performance pads to achieve a variety of effects.

→ “Selecting tones” (p. 12)



Special pad

Muting the sound (muffling its decay)

You can mute the sound of a pad as it decays or fades out, by lightly pressing the pad without striking it.

This mute technique works on the following tones. Other tones are not muted.

* Some of the tones that you can set with the “Mood Pan Plus” app can also be muted.

- Handpan
- Tongue Drum
- Singing Bowl
- Crystal Bowl
- User 4 Tuning Fork

Adjusting the pad sensitivity

Different players play the pads at different strengths. You can adjust the sensitivity on this instrument so that it responds according to how hard you play the pads.

1. Turn the [Effects] knob while holding down the [Background Music] buttons.

Playing dynamics	Explanation
Hard	Turn the [Effects] knob counterclockwise to lower the sensitivity.
Soft	Turn the [Effects] knob clockwise to raise the sensitivity.

- * Edit the SIDE SENSITIVITY value in the “Mood Pan Plus” app if you want to change how the instrument responds according to how hard you slap both edges.

Selecting tones

1. Use the [Tone] knob to select a tone (sound).

Tone name	Explanation
Handpan	<p>This is a metal percussion instrument developed in Switzerland in the early 2000s.</p> <ul style="list-style-type: none">• Play the performance pads while holding down the special pad to play overtones.• Slap near the sides of the instrument to hear the sound of slapping the side of a handpan.
Tongue Drum	<p>A metal percussion instrument with slits.</p> <ul style="list-style-type: none">• Slap near the sides of the instrument to play with a swinging technique (the sound of a mallet head inserted into the drum and swinging back and forth to make sound). Slapping once makes the swinging sound sustain, and slapping again makes the sound stop.
Gamelan	<p>An instrument that plays the melodies of Indonesian folk music. The melodic scales are broken down into the <i>pemade</i>, <i>jublag</i> (higher notes) and the <i>jegogan</i> (lower notes). Pad 1 (the center pad) makes a gong sound.</p> <ul style="list-style-type: none">• Slapping near the sides of the instrument plays a <i>kendang</i> sound.

Tone name	Explanation
Singing Bowl	<p>An instrument that has been used since ancient times in countries such as Tibet and Nepal in holy ceremonies.</p> <ul style="list-style-type: none">• Press into the performance pads slowly while holding down the special pad to hear the resonating sound. You can change the volume of the rubbing stick sound that is heard in the resonant sound, according to how much you press into the pads.• Slap around the sides of the instrument to play a <i>tingsha</i> sound. <p>* As the sound has no pitch, it does not change when you use the [Style] knob to change the scale or use the app to alter the base frequency.</p>
Crystal Bowl	<p>A cylindrical instrument made of crystal.</p> <ul style="list-style-type: none">• Press into the performance pads slowly while holding down the special pad to hear the resonating sound. You can change the volume of the rubbing stick sound that is heard in the resonant sound, according to how much you press into the pads.• Slap around the sides of the instrument to play a <i>tingsha</i> sound.

Selecting tones

Tone name	Explanation
Sitar	<p>A traditional Indian stringed instrument.</p> <ul style="list-style-type: none"> You can achieve a sitar bend effect (the pitch bends upwards) by pressing into the performance pads. Press the special pad to play a sympathetic string sound. Slap around the sides of the instrument to play a tabla sound.
Strings	A stringed instrument sound.
Synth	<p>A soft continuous synthesizer sound.</p> <ul style="list-style-type: none"> Play while pressing the special pad to control the synthesizer filter, making the sound darker or brighter. Slap around the sides of the instrument to play a <i>tingsha</i> sound.
User1	<p>The Fantasia tone is assigned by factory default.</p> <ul style="list-style-type: none"> You can use the "Mood Pan Plus" app to set a different tone. Play while pressing the special pad to control the synthesizer filter, making the sound darker or brighter. Slap around the sides of the instrument to play a <i>tingsha</i> sound.

Tone name	Explanation
User2	<p>A <i>didgeridoo</i> sound (an instrument played by the indigenous peoples of Australia) is assigned by factory default.</p> <p>Play the performance pads once to hear a repeating phrase, and play them again to stop the phrase.</p> <p>If you play a performance pad to trigger a continuous sound, and then play a different pad while that phrase is still playing, the phrase that's still playing stops, and the sound triggered by the new pad takes priority.</p> <ul style="list-style-type: none"> Pad 1 = phrase 1, BPM 130 Pad 2 = phrase 2, BPM 130 Pad 3 = phrase 3, BPM 130 Pad 4 = phrase 1, BPM 110 Pad 5 = phrase 1, BPM 90 Pad 6 = phrase 2, BPM 110 Pad 7 = phrase 2, BPM 90 Pad 8 = phrase 3, BPM 110 Pad 9 = phrase 3, BPM 90 <p>* Use the [Style] knob to adjust the scale tone (C-B) of the didgeridoo. A[♭] is the lowest pitch.</p> <ul style="list-style-type: none"> You can use the "Mood Pan Plus" app to set a different tone. Slap around the sides of the instrument to play a clapstick sound.

Selecting tones

Tone name	Explanation
User3	<p>The sound of the <i>santur</i>, a hammered dulcimer of Iranian origin is assigned with the factory settings.</p> <ul style="list-style-type: none">• You can use the “Mood Pan Plus” app to set a different tone.• Play the performance pads while holding down the special pad to play tremolo.• Slap around the sides of the instrument to play a <i>tombak</i> sound.
User4	<p>The tuning fork tone is assigned by factory default.</p> <ul style="list-style-type: none">• Pad 1 = 174 Hz• Pad 2 = 285 Hz• Pad 3 = 396 Hz• Pad 4 = 417 Hz• Pad 5 = 528 Hz• Pad 6 = 639 Hz• Pad 7 = 741 Hz• Pad 8 = 852 Hz• Pad 9 = 963 Hz• Press the special pad = 4069 Hz <p>* The frequencies listed above do not change when you use the [Style] knob to change the scale or use the app to alter the base frequency.</p> <p>* As the tones also include harmonic components, they may sound higher than the frequencies listed here.</p> <ul style="list-style-type: none">• You can use the “Mood Pan Plus” app to set a different tone.

Selecting the styles

Select the style (scale) you want to use, as shown below.

The mood of the sound differs depending on the style you choose.

Style name (names of scales typically used on a handpan)	Description and pad 1–9 scale
Major (Sabye)	A major scale with an uplifting feel. D3, G3, A3, B3, C [#] 4, D4, E4, F [#] 4, A4
Minor (Kurd)	A minor scale with a mysterious feel. D3, A3, B ^b 3, C4, D4, E4, F4, G4, A4
Celtic (Celtic)	A scale that's similar to the Celtic scale. D3, A3, C4, D4, E4, F4, G4, A4, C5
Arabic (Hijaz)	A Middle Eastern scale. C [#] 3, G [#] 3, A3, B3, C [#] 4, D4, F4, F [#] 4, G [#] 4
Relax (YshaSavita)	A scale that's suitable for relaxation and meditation. C [#] 3, G [#] 3, C4, C [#] 4, D [#] 4, F4, F [#] 4, G [#] 4, C [#] 5
Indian (Raga Desh)	An Indian scale. C [#] 3, G [#] 3, B3, C [#] 4, F4, F [#] 4, G [#] 4, B4, C [#] 5
Meditation (Pygmy)	A meditative scale. D3, G3, A3, B ^b 3, D4, F4, G4, A4, B ^b 4
Japanese (Akebono)	A scale for traditional Japanese music. G3, C4, D4, E ^b 4, G4, A ^b 4, C5, D5, E ^b 5
Equinox (Equinox)	A passionate minor scale. E3, G3, B3, C4, D4, E4, F [#] 4, G4, B4

Style name (names of scales typically used on a handpan)	Description and pad 1–9 scale
Romantic (La Sirena)	A scale with a romantic mood. E3, G3, B3, C [#] 4, D4, E4, F [#] 4, G4, B4
Dreamy (Magic Voyage)	A scale with dreamy harmonics. F3, A ^b 3, C4, E ^b 4, F4, G4, A ^b 4, C5, E ^b 5
Aegean (Aegean)	A scale that evokes images of the Aegean Sea. C3, E3, G3, B3, C4, E4, F [#] 4, G4, B4

* The octaves for some user tones can be shifted.

Adding effects to the sound (Effects)

1. Turn the [Effects] knob.

Turning the knob clockwise increases the effect depth.
Turning the knob all the way counterclockwise turns the effect off.

- * The reverb effect (which adds reverberations to the sound) is set by factory default.

MEMO

Use the “Mood Pan Plus” app to change the effect type to something besides reverb.

You can set and save the effect type for each tone.

App setting parameters

Parameter	Value
Effect Type	Auto Wah Cyclically controls a filter to create a wah effect (cyclic changes in timbre).
	Phaser The phase of the original sound is shifted to modulate the overall sound.
	Ring Modulator Applies amplitude modulation (AM) to the input signal, producing bell-like sounds.
	Delay Plays back the input sound repeatedly, creating an echo effect.
	Phonograph Recreates the sound of an analog record being played on a record player.
	Pitch Shifter Shifts the pitch of the original sound.
	Reverb Produces a reverberation effect.
	Auto Wah + Reverb
	Phaser + Reverb
	Ring Modulator + Reverb
	Delay + Reverb
	Phonograph + Reverb
	Pitch Shifter + Reverb

Restoring the factory settings (factory reset)

Here's how to return the Mood Pan to its factory settings.

1. Turn the power on while holding down the [✱] (Bluetooth) and [Background Music] buttons.

Keep holding down the [✱] (Bluetooth) and [Background Music] buttons until they blink.

2. Press the [✱] (Bluetooth) and [Background Music] buttons at the same time.

The power turns off after the [✱] (Bluetooth) and [Background Music] buttons blink rapidly for a while.

3. Turn the power of the Mood Pan off and then on again.

Using the **Bluetooth®** functionality

You can use this instrument along with a mobile device such as a smartphone or tablet (hereafter “smartphone”).

- Use the “Mood Pan Plus” app to make detailed settings on the Mood Pan or listen to tones only available on the app.
- You can use the speakers of the Mood Pan to hear natural environmental sounds played from your smartphone. You can also play this instrument along with the natural environmental sounds.

Using this instrument with an app

Connect this instrument to your smartphone to use the “Mood Pan Plus” app.

1. Install the “Mood Pan Plus” app on your smartphone.

Download the app from the App Store if you have an iOS device, or from Google Play if you have an Android device.

Pairing

To connect the Mood Pan wirelessly via Bluetooth, you must first “pair” it, to create a one-to-one connection with your smartphone.

1. Place the smartphone near the Mood Pan.

2. Long-press the [⌵] (Bluetooth) button on the Mood Pan.

The [⌵] (Bluetooth) button starts blinking quickly to show that the instrument is ready to pair.

- * Quickly press the [⌵] (Bluetooth) button to turn Bluetooth on/off.

3. In your smartphone's settings, turn Bluetooth on.



4. Tap “MN-10 AUDIO” as shown in the Bluetooth device screen of your smartphone.

This pairs the Mood Pan to your smartphone.

When you see the following screen on your smartphone, pairing is complete.

iOS devices

“MY DEVICES”

→ “MN-10 Audio Connected”

Android devices

“Paired Devices”

→ “MN-10 Audio”

- * Depending on the model of smartphone you’re using, you might need to tap “MN-10 Audio” again to show “Connected for audio”, which completes the pairing.

5. Launch the “Mood Pan Plus” app.

6. Tap the [Scan] button.

7. Tap “MN-10 MIDI” once it appears.

8. Once “Connected” is shown, tap the [Close] button.

When the pairing request appears, use the steps below to authorize the pairing.

iOS devices

1. Tap [Pair].

Android devices

1. Tap [Pair & connect].
2. Tap [Pair].

- * To disconnect, either press the [⌵] (Bluetooth) button on the Mood Pan to make the button go dark, or turn Bluetooth off in your smartphone’s settings.

[⌵] (Bluetooth) button	Explanation
Lit	Connected via Bluetooth
Blinks slowly	Waiting for Bluetooth MIDI connection
Blinks rapidly	Waiting for Bluetooth Audio pairing
Unlit	Bluetooth off

Using the Bluetooth® functionality

MN-10 MIDI	The instrument must be paired/connected to change the settings and edit tones with the “Mood Pan Plus” app.
MN-10 AUDIO	The instrument must be paired/connected to play back an environment with the “Mood Pan Plus” app.

Using the “Mood Pan Plus” app

To use the “Mood Pan Plus” app, follow the steps below to show the Owner’s Manual and read the contents carefully before use.

- 1. Launch the app and tap the gear icon onscreen.**
The Setting screen appears.
- 2. Tap the arrow next to “Manual” on the Setting screen.**
This shows the Owner’s Manual for the app.

If you can’t connect via Bluetooth

If pairing between the Mood Pan and your smartphone is unsuccessful, check the following.

In your smartphone’s settings, is Bluetooth turned on?

- Switch Bluetooth on in your smartphone’s settings.
- * If it is on but you still can’t connect, try turning it off and then on again.

Using the Bluetooth® functionality

Can't connect with the "Mood Pan Plus" app

Temporarily disconnect Bluetooth on your smartphone, and then try setting up the connection again.

After performing a factory reset, make sure to follow the steps below.

- 1. Make sure that the Mood Pan's Bluetooth function is "On".**

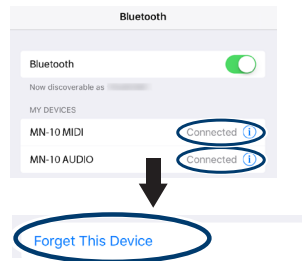
If the [⌘] (Bluetooth) button is not lit, press the button to make it blink or light up.

- 2. Close all apps on the smartphone.**

- 3. If paired, use the smartphone's settings to disconnect, and turn the Bluetooth switch off.**

Cancelling the pairing

- 1. In the mobile device's screen, tap the "i" located beside "Connected", and tap "Forget This Device".**



- 2. Turn the Bluetooth switch off.**



- 4. Turn on location data on your smartphone.**

Using the Bluetooth® functionality

5. Start pairing again from step 1 in "Pairing" (p. 18).

MEMO

If checking these points does not solve the problem, please refer to the Roland support website.

<https://www.roland.com/support/>

Using this instrument along with a computer (USB AUDIO/USB MIDI)

You can transmit and receive MIDI and audio data when this instrument is connected to your computer via a commercially available USB cable.

- * Do not use a USB cable that is designed only for charging a device. Charge-only cables cannot transmit data.

MEMO

You don't need to install a driver.

1. Install the batteries here.
2. Turn the power on.
3. Connect your computer to this instrument with a USB cable.

- * A USB cable is not included. Use a USB cable that supports USB 2.0 Hi-Speed.

MEMO

If the [Background Music] button blinks after you press the power button, this indicates that the instrument can't be powered via USB bus power (at least 9 V, 2 A) from your computer. Sound is not heard from the speakers when there is insufficient power.

Name of MIDI connectors and transmit/receive channels of this instrument

Item	Explanation
MIDI connector name	MN-10 MIDI
MIDI transmit/receive channel	Ch. 1, Ch. 2 (for some tones, data may be output from both channels)

Using this instrument as a pad controller

You can use this instrument as a pad controller when it is connected to a computer via USB.


1. Turn the [Tone] knob and select "Gamelan".
When "Gamelan" is selected, only MIDI note messages are output. The MIDI data that's unnecessary for pad controllers (such as aftertouch, pitch bend and so on) is not output.

MEMO

When you select the "Gamelan" tone, the center pad (pad 1) always plays note number 47, regardless of the [Style] knob setting.

Main specifications

Pads	90 mm (3-35/64 inches) x 1 60 mm (2-23/64 inches) x 8 30 mm (1-3/16 inches) x 1 with Pressure Sense
Tones	12 + additional tones (available with App Mood Pan Plus)
Effect type	Auto Wah Phaser Ring Modulator Delay Phonograph Pitch Shifter Reverb Auto Wah + Reverb Phaser + Reverb Ring Modulator + Reverb Delay + Reverb Phonograph + Reverb Pitch Shifter + Reverb
Controllers	Volume, Style, Tone, Effect
Bluetooth	Ver 4.2 Profile Support: A2DP (Audio), GATT (MIDI over Bluetooth Low Energy) Supported codec: SBC (compatible with SCMS-T content protection)
Connectors	PHONES/REC OUT jack: Stereo miniature phone type [] (USB) port: USB Type-C [®] (Audio, MIDI)
Speaker Amp Output	1.2 W x 2 (8 Ω) 2.1 W x 1 (4 Ω)



Speakers	(3.5 x 8 cm) x 2 10 cm x 1
Power Supply	USB bus power supply (USB Type-C port, 9 V  / 2 A or higher) Ni-MH batteries (AA, HR6) (sold separately) x 6 Alkaline battery (AA, LR6) (sold separately) x 6
Current Draw (varies depending on actual conditions of use)	Approx. 400 mA
The expected battery life under continuous use depends on the conditions of use.	Ni-MH battery (1900 mAh): Approx. 5 hours Alkaline battery: Approx. 4 hours
Dimensions	316 (Diameter) x 94 (Height) mm 12-1/2 (Diameter) x 3-3/4 (Height) inches
Weight (including batteries)	2.4 kg 5 lbs 5 oz
Accessories	Owner's manual, Alkaline battery (AA, LR6) x6

* This document explains the specifications of the product at the time that the document was issued. For the latest information, refer to the Roland website.




USING THE UNIT SAFELY

INSTRUCTIONS FOR THE PREVENTION OF FIRE, ELECTRIC SHOCK, OR INJURY TO PERSONS

About ⚠ WARNING and ⚠ CAUTION Notices

 WARNING	Used for instructions intended to alert the user to the risk of death or severe injury should the unit be used improperly.
 CAUTION	Used for instructions intended to alert the user to the risk of injury or material damage should the unit be used improperly. * Material damage refers to damage or other adverse effects caused with respect to the home and all its furnishings, as well to domestic animals or pets.

About the Symbols

	The ⚠ symbol alerts the user to important instructions or warnings. The specific meaning of the symbol is determined by the design contained within the triangle. In the case of the symbol at left, it is used for general cautions, warnings, or alerts to danger.
	The ⚡ symbol alerts the user to items that must never be carried out (are forbidden). The specific thing that must not be done is indicated by the design contained within the circle. In the case of the symbol at left, it means that the unit must never be disassembled.
	The ⚡ symbol alerts the user to things that must be carried out. The specific thing that must be done is indicated by the design contained within the circle. In the case of the symbol at left, it means that the power-cord plug must be unplugged from the outlet.

ALWAYS OBSERVE THE FOLLOWING

USING THE UNIT SAFELY



WARNING

Concerning the Auto Power Off function

The power to this unit will be turned off automatically after a predetermined amount of time has passed since it was last used for playing music, or its buttons or controls were operated (Auto Power Off function). If you do not want the power to be turned off automatically, disengage the Auto Power Off function ("Mood Pan Plus" app).



Do not disassemble or modify by yourself

Do not carry out anything unless you are instructed to do so in the owner's manual. Otherwise, you risk causing malfunction.



Do not repair or replace parts by yourself

Be sure to contact your dealer, a Roland service center, or an official Roland dealer.



For a list of Roland service centers and official Roland dealers, refer to the Roland website.



WARNING

Do not use or store in the following types of locations

- Subject to temperature extremes (e.g., direct sunlight in an enclosed vehicle, near a heating duct, on top of heat-generating equipment); or are
- Damp (e.g., baths, washrooms, on wet floors); or are
- Exposed to steam or smoke; or are
- Subject to salt exposure; or are
- Exposed to rain; or are
- Dusty or sandy; or are
- Subject to high levels of vibration and shakiness; or are
- Placed in a poorly ventilated location.



Do not place in an unstable location

Otherwise, you risk injury as the result of the unit toppling over or dropping down.



WARNING

Avoid extended use at high volume

Use of the unit at high volume for extended periods of time may cause hearing loss. If you ever experience any hearing loss or ringing in the ears, you should immediately stop using the unit and consult a specialized physician.



Do not allow foreign objects or liquids to enter unit; never place containers with liquid on unit

Do not place containers containing liquid (e.g., flower vases) on this product. Never allow foreign objects (e.g., flammable objects, coins, wires) or liquids (e.g., water or juice) to enter this product. Doing so may cause short circuits, faulty operation, or other malfunctions.



USING THE UNIT SAFELY

WARNING

Turn off the unit if an abnormality or malfunction occurs

In the following cases, immediately turn off the power and contact your dealer, a Roland service center, or an official Roland dealer for service.



- If smoke or unusual odor occurs; or
- Objects have fallen into, or liquid has been spilled onto the unit; or
- The unit has been exposed to rain (or otherwise has become wet); or
- The unit does not appear to operate normally or exhibits a marked change in performance.

For a list of Roland service centers and official Roland dealers, refer to the Roland website.

WARNING

Be cautious to protect children from injury

Always make sure that an adult is on hand to provide supervision and guidance when using the unit in places where children are present, or when a child will be using the unit.



Do not drop or subject to strong impact

Otherwise, you risk causing damage or malfunction.



WARNING

Handle batteries carefully

If used improperly, you risk the dangers of fluid leakage, overheating, combustion, explosion, etc. Carefully observe the following:

- Do not heat, disassemble, or toss them into a fire or water.
- Do not expose them to sunlight, flame, or any other source of extreme heat.
- When using a rechargeable battery and a charger, make sure to use only the combination of rechargeable battery and charger that has been specified by the battery manufacturer. Also, be sure to read all of the precautions that were supplied with the rechargeable battery and charger, and abide by them when using the battery/charger.



USING THE UNIT SAFELY



CAUTION

Route all power cords and cables in such a way as to prevent them from getting entangled

Injury could result if someone were to trip on a cable and cause the unit to fall or topple.



Avoid climbing on top of the unit, or placing heavy objects on it

Otherwise, you risk injury as the result of the unit toppling over or dropping down.



Disconnect all cords/cables before moving the unit

Damage or malfunction may result if you fail to disconnect all cables before moving the unit.



CAUTION

Handle batteries carefully

If used improperly, batteries may explode or leak and cause damage or injury. In the interest of safety, please read and observe the following precautions.



- Carefully follow the installation instructions for batteries, and make sure you observe the correct polarity.
- Avoid using new batteries together with used ones. In addition, avoid mixing different types of batteries.
- Remove the batteries whenever the unit is to remain unused for an extended period of time.
- Never keep batteries together with metallic objects such as ballpoint pens, necklaces, hairpins, etc.
- Used batteries must be disposed of in compliance with whatever regulations for their safe disposal that may be observed in the region in which you live.



CAUTION

Handle leaking batteries carefully

Whenever the liquid from a battery has leaked, observe the following precautions.



- Do not touch the liquid with your bare hands.
- If any of the leaking fluid gets into your eyes, the loss of vision may result. Do not rub your eyes; use clean water to flush them thoroughly. Then, promptly see a doctor.
- Burning of the skin or dermatitis may result if fluid has gotten onto your skin or clothing. Use clean water to flush affected areas thoroughly; then, promptly see a doctor.
- Using a soft cloth, carefully wipe any remaining fluid from the inside of the battery compartment. Then, install new batteries.

IMPORTANT NOTES

Power Supply: Use of Batteries

- Before installing/removing batteries, make sure to turn off the power to this unit and disconnect all connections to other devices.
- If the batteries run extremely low, the sound may distort / interruptions in the sound may occur at high volume levels, but this does not indicate a malfunction. If this occurs, please replace the batteries / use the USB AC adapter.
- If operating this unit on batteries, please use alkaline batteries, Ni-MH batteries.

Placement

- Using the unit near power amplifiers (or other equipment containing large power transformers) may induce hum. To alleviate the problem, change the orientation of this unit; or move it farther away from the source of interference.
- This unit may interfere with radio and television reception. Do not use this unit in the vicinity of such receivers.
- Noise may be produced if wireless communications devices, such as cell phones, are operated in the vicinity of this unit. Such noise could occur when receiving or initiating a call, or while conversing. Should you experience such problems, you should relocate such wireless devices so they are at a greater distance from this unit, or switch them off.

- When moved from one location to another where the temperature and/or humidity is very different, water droplets (condensation) may form inside the unit. Damage or malfunction may result if you attempt to use the unit in this condition. Therefore, before using the unit, you must allow it to stand for several hours, until the condensation has completely evaporated.
- Depending on the material and temperature of the surface on which you place the unit, its rubber feet may discolor or mar the surface.
- Do not place containers or anything else containing liquid on top of this unit. Also, whenever any liquid has been spilled on the surface of this unit, be sure to promptly wipe it away using a soft, dry cloth.

IMPORTANT NOTES

Maintenance

- Never use benzine, thinners, alcohol or solvents of any kind, to avoid the possibility of discoloration and/or deformation.

Repairs and Data

- Before sending the instrument away for repairs, be sure to store the data by using the dedicated app; or you may prefer to write down the needed information. Although we will do our utmost to preserve the data stored in your unit when we carry out repairs, in some cases, such as when the memory section is physically damaged, restoration of the stored content may be impossible. Roland assumes no liability concerning the restoration of any stored content that has been lost.

Additional Precautions

- Any data stored within the unit can be lost as the result of equipment failure, incorrect operation, etc. To protect yourself against the irretrievable loss of data, be sure to make a backup of the data stored within it; or you may prefer to write down the needed information.
- Roland assumes no liability concerning the restoration of any stored content that has been lost.
- Use a reasonable amount of care when using the unit's buttons, sliders, or other controls; and when using its jacks and connectors. Rough handling can lead to malfunctions.
- When disconnecting all cables, grasp the connector itself—never pull on the cable. This way you will avoid causing shorts, or damage to the cable's internal elements.
- To avoid disturbing others nearby, try to keep the unit's volume at reasonable levels.
- This instrument is designed to minimize the extraneous sounds produced when it's played. However, since sound vibrations can be transmitted through floors and walls to a greater degree than expected, take care not to allow these sounds to become a nuisance others nearby.
- When disposing of the packing carton or cushioning material in which this unit was packed, you must observe the waste disposal regulations that apply to your locality.
- Continuous playing may cause discoloration of the pad, but this will not affect the pad's function.

Caution Regarding Radio Frequency Emissions

- The following actions may subject you to penalty of law.
 - Disassembling or modifying this device.
 - Removing the certification label affixed to the back of this device.
 - Using this device in a country other than where it was purchased

Intellectual Property Right

- The copyright of content in this product (the sound waveform data, style data, accompaniment patterns, phrase data, audio loops and image data) is reserved by Roland Corporation.
- Purchasers of this product are permitted to utilize said content (except song data such as Demo Songs) for the creating, performing, recording and distributing original musical works.
- Purchasers of this product are NOT permitted to extract said content in original or modified form, for the purpose of distributing recorded medium of said content or making them available on a computer network.
- The **Bluetooth®** word mark and logos are registered trademarks owned by Bluetooth SIG, Inc. and any use of such marks by Roland is under license.
- This Product uses the Source Code of µT-Kernel under T-License 2.0 granted by the T-Engine Forum (www.tron.org).

- This product includes third party open source software.

Copyright © 2009-2018 Arm Limited.
All rights reserved.

Licensed under the Apache License, Version 2.0 (the "License");

You may obtain a copy of the License at

<http://www.apache.org/licenses/LICENSE-2.0>

- Roland is either a registered trademark or a trademark of Roland Corporation in the United States and/or other countries.
- Company names and product names appearing in this document are registered trademarks or trademarks of their respective owners.

MIDI Implementation Chart

Model MN-10

Date : Feb. 1, 2025

Version : 1.00

Function...		Transmitted	Recognized	Remarks
Basic Channel	Default Changed	1-2 x	1-2 x	
Mode	Default Message Altered	Mode 3 x *****	Mode 3 x x	
Note Number	: True Voice	0-127 *****	0-127 0-127	
Velocity	Note On Note Off	o 9nH, v = 1-127 o 8nH, v = 127	o o	
After Touch	Key's Channel's	o x	*1 o x	
Pitch Bend		x	x	
Control Change	80,81	o (Special pad)	*2 o	General purpose controller 5, 6
Program Change	: True Number	x *****	x x	
System Exclusive		o	*3 o	*3

MIDI Implementation Chart

System Common	: Song Position : Song Select : Tune	x x x	x x x	
System Realtime	: Clock : Commands	x o	x x	
Aux Messages	: All Sound O : Reset All Controllers : Local On/O : All Notes O : Active Sensing : System Reset	x x x x x x	o (120, 124–127) o (121) x o (123) x x	*4
Notes	<p>*1: Aftertouch messages are sent when lightly pressing a performance pad to simulate a mute technique, pressing into a performance pad to simulate a pitch bend, or when the synthesizer volume changes. (This depends on the tone.)</p> <p>*2: Control change messages are transmitted when the special pad is played, when a special sound is triggered by holding down the special pad and playing another pad, or when either the noise volume of the resonant sound or of the synthesizer changes. (This depends on the tone.)</p> <p>*3: When an identity request message is received, this transmits an identity reply message.</p> <p>*4: Same effect as All Sound Off.</p>			

Mode 1: Omni On, Poly
Mode 3: Omni O, Poly

Mode 2: Omni On, Mono
Mode 4: Omni O, Mono

o: Yes
x: No

