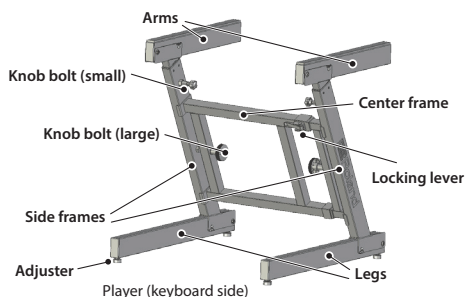


- Before using this unit, carefully read the leaflet "USING THE UNIT SAFELY" and "IMPORTANT NOTES". After reading, keep the document(s) where it will be available for immediate reference.
- This document explains the specifications of the product at the time that the document was issued. For the latest information, refer to the Roland website.

## Part Descriptions

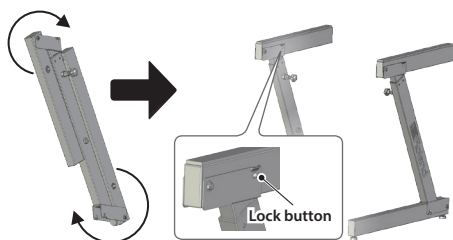


## Assembly

### Attaching the Side Frames

1. Open the arm and leg of each side frame until you hear a click.

Make sure that the lock buttons of the arm and leg fit into the holes and are secure.



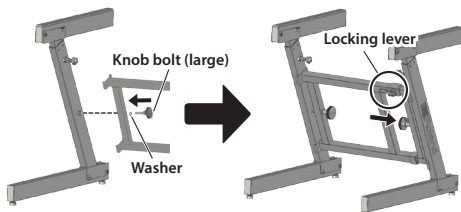
#### NOTE

When opening the arm and leg of each side frame, take care not to pinch your finger etc.

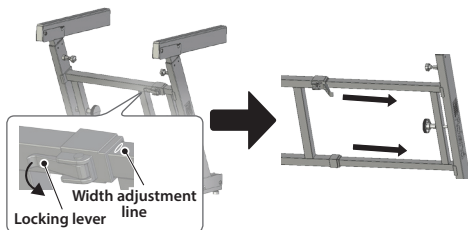
### Attaching the Center Frame

1. Using the included knob bolts (large) and washers, fasten the left and right side frames to the center frame.

\* Assemble the center frame so that the locking lever faces up and towards you.

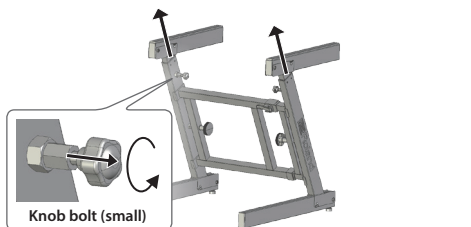


### Adjusting the Width



1. Release (pull up) the locking lever.
  2. Adjust the stand width by extending the center frame to match the width of the keyboard.
- \* Do not extend the center frame past the width adjustment line.
3. Lock (push down) the locking lever to firmly stabilize the center frame.

### Adjusting the Height



1. Loosen the knob bolt (small) of each side frame.
2. While pulling out the knob bolt (small), lift up the arm and adjust it to the height adjustment line.

\* You must adjust it precisely to the height adjustment line.

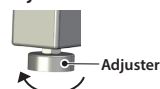
3. Release the knob bolt (small).

When you release the knob bolt (small), it enters the screw hole.

\* Slightly raise and lower the arm to verify that it is locked.

4. Firmly tighten the knob bolt (small) to secure it.

5. If the stand wobbles, stabilize it by turning the adjusters.



Roland is an either registered trademark or trademark of Roland Corporation in the United States and/or other countries.